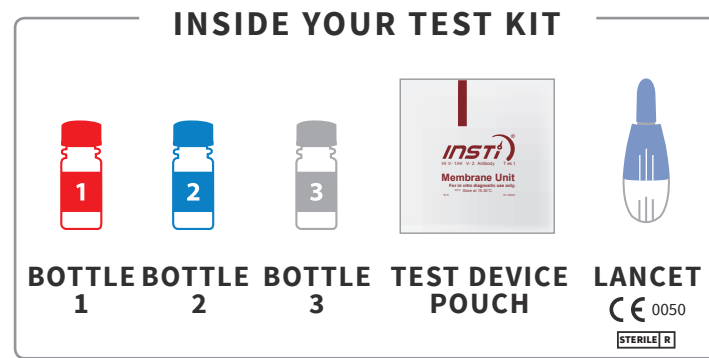


INSTI[®] HIV SELF TEST INSTRUCTIONS

Intended Use:
for untrained lay users as a self test to detect HIV-1 and HIV-2 antibodies using a drop of human fingerstick blood

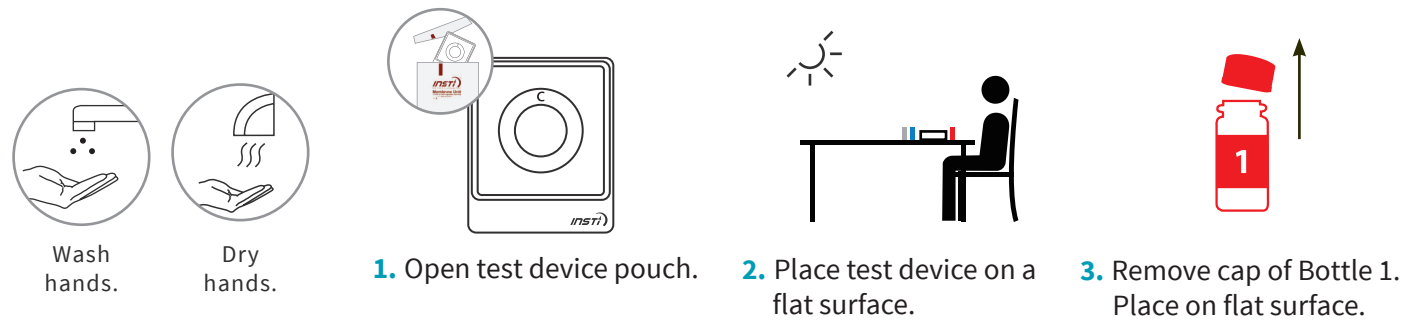
Questions?
+1-604-204-6784
www.INSTI-HIVSelfTest.com



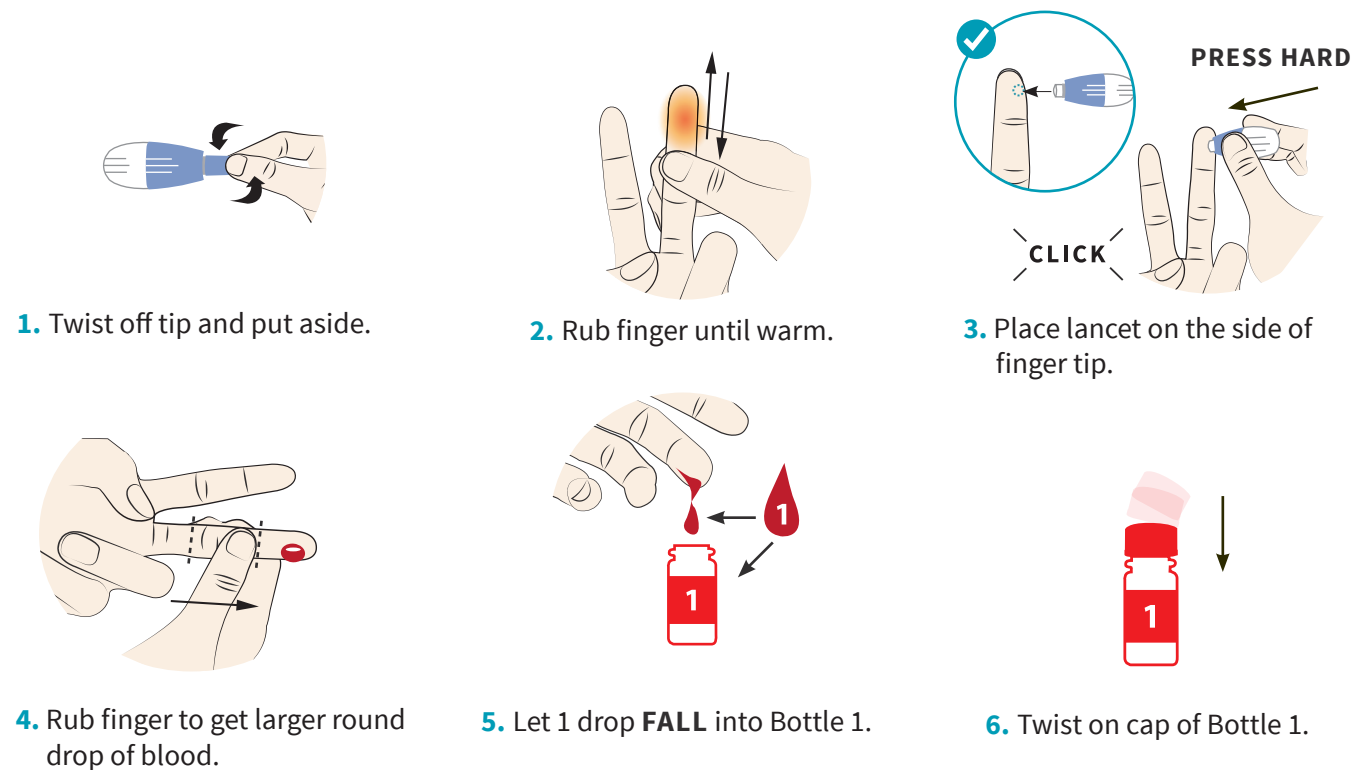
Do not use if the test device pouch is broken.

Do not use if you:
• have a bleeding disorder
• are on ART

PREPARATION



STEP 1: COLLECT BLOOD



STEP 2: TEST



STEP 3: READ RESULT

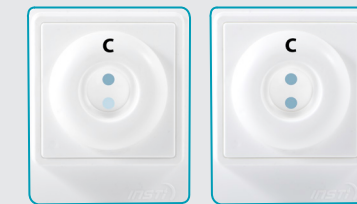
READ RESULT RIGHT AWAY AND **WITHIN 5 MINUTES.**



NEGATIVE

3 TEST AGAIN IN 3 MONTHS

INSTI[®] has a specificity of 99.5%. This means a negative result will be correct 995 out of every 1000 tests.



POSITIVE

It does not matter how light or dark either dot is.

GO TO CLINIC FOR CONFIRMATORY TESTING

INSTI[®] has a sensitivity of 99.8%. This means a positive result will be correct 998 out of every 1000 tests.



INVALID

GO TO CLINIC FOR CONFIRMATORY TESTING

DISPOSAL



1. Put all items back into the pouch. 2. Throw away pouch in waste bin.

Blood can transmit infectious diseases. Clean up spills.

Dispose in accordance to local regulations.

Manufacturer Caution Use by date LOT Lot number
REF Catalogue number IVD For in vitro diagnostic use only Do not reuse X_n Contains sodium azide Harmful if swallowed
Consult the Self Test instructions Store at 2 - 30°C or refrigerated (2 - 8°C) if required Sterilization using irradiation



Manufactured by bioLytical Laboratories Inc.
1108 - 13351 Commerce Parkway,
Richmond, BC V6V 2X7 Canada
Phone: +1 604 204 6784
Fax: +1 604 244 8399
www.bioLytical.com
©Copyright 2017 All rights reserved.



MAAGIZO YA KIPIMO CHA KIBINAFSI CHA HIV CHA INSTI

Matumizi Yaliyokusudiwa:

Kwa wale wasio na mafunzo au utaalumu. Hutumika kwa kujipima mwenyewe kutambua virusi aina ya HIV-1 na HIV-2 kwa kutumia kiasi kidogo cha damu katika sehemu ya kidole.

Maswali?

+1-604-204-6784

www.INSTI-HIVSelfTest.com

NDANI YA ZANA ZAKO ZA KIPIMO

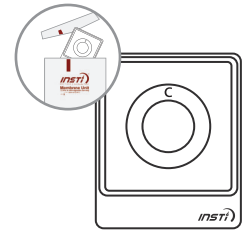


CHUPA YA 1 CHUPA YA 2 CHUPA YA 3 MFUKO WA KIFAA CHA KIPIMO SINDANO
CE 0050 STERILE

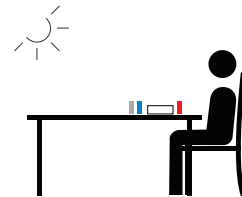
Usitumie ikiwa mfuko wa kifaa cha kipimo umefunguliwa.

Usitumie ikiwa:
• una tatizo la kuvuja damu
• unatumia ART

MATAYARISHO



1. Fungua mfuko wa kifaa cha kipimo.

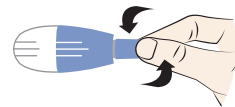


2. Weka kifaa cha kipimo mahali tambarare.

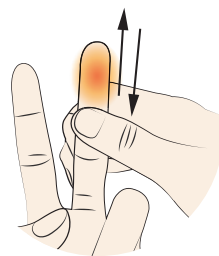


3. Funua kifuniko cha Chupa 1. Kiweke mahali tambarare.

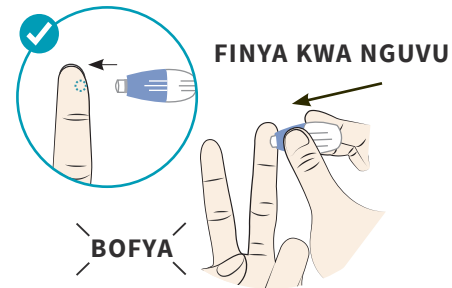
HATUA YA 1: CHUKUA DAMU



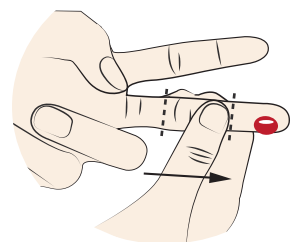
1. Ondoa sehemu ya juu na uiweke kando.



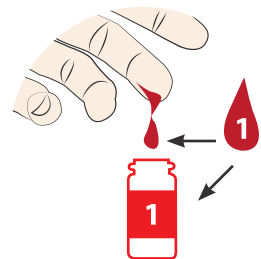
2. Suga kidole mpaka kipate joto.



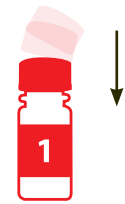
3. Elekeza sindano mwishoni mwa kidole.



4. Suga kidole ili kupata tone kubwa la damu.

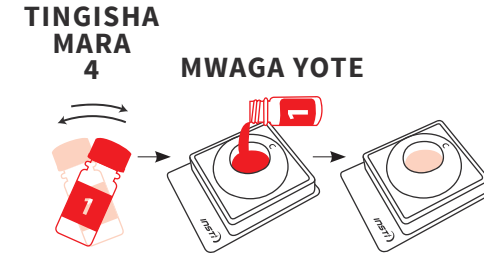


5. Angusha tone 1 ndani ya Chupa ya 1.

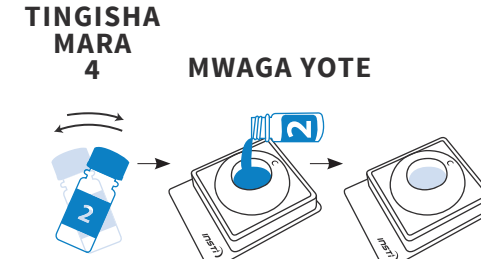


6. Funika kifuniko cha Chupa 1.

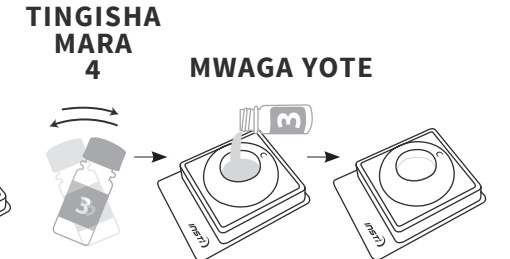
HATUA YA 2: KIPIMO



1. Tingisha na umwage yote. Subiri mpaka yote yapotelee ndani.



2. Tingisha na umwage yote. Subiri mpaka yote yapotelee ndani.



3. Tingisha na umwage yote. Subiri mpaka yote yapotelee ndani.

HATUA YA 3: SOMA TOKEO

SOMA TOKEO MARA MOJA NA NDANI YA DAKIKA 5.



HAUNA HIV

3 PIMA TENA BAADA YA MIEZI 3

INSTI® ina uhakika wa 99.5%. Hii inamaanisha tokeo la kwamba hauna HIV litakuwa sahihi kwa vipimo 995 kati ya vipimo 1000.



HUENDA UNA HIV

Haujalishi wepesi au uzito wa rangi iliyo kwenye nukta/tone.

NENDA KWENYE KLINIKI YA KUPATA KUPIMA CONFIRMATORY

INSTI® ina uwezo wa kipimo wa 99.8%. Hii inamaanisha tokeo la kwamba una HIV litakuwa sahihi kwa vipimo 998 kati ya vipimo 1000.



HAIJULIKANI

NENDA KWENYE KLINIKI YA KUPATA MTHANI MWINGINE

KUTUPA



1. Rudisha vitu vyote ndani ya mfuko.



2. Tupa mfuko huo katika pipa la taka.

Damu inaweza kusambaza magonjwa ya kuambukiza. Safisha damu iliyomwagika.

Baada ya kutumia tupa kwa njia inayofaa kulingana na taratibu au sharia za Nchi unayoishi.

Mtengenezaji Tahadhari Tumia kufikia tarehe LOT Nambari ya rundo
REF Nambari ya katalogi IVD Kwa utumizi wa utambuzi wa nje ya mwili pekee Usitumie tena X_N Ina sodiamu azidi Ina madhara ikimezwa
Rejelea maagizo ya Kipimo cha Kibinafsi Hifadhi katika joto rindi la 2 - 30 °C au ndani ya friji (2 - 8 °C) ikiwa inahitajika STERILE Kuhakikisha kutokuwa na viini kabla ya matumizi miale mbali (irradiation) imetumika.



Imetengenezwa na bioLytical Laboratories Inc. 1108 - 13351 Commerce Parkway, Richmond, BC V6V 2X7 Kanada Simu: +1 604 204 6784 Faksi: +1 604 244 8399 www.biolytical.com ©Copyright 2017 Haki zote zimehifadhiwa. 51-1192(D) 01-May-2017